

Review Article

Behavioral and Emotional Dyscontrol Following Traumatic Brain Injury: A Systematic Review of Neuroimaging and Electrophysiological Correlates



Barry R. Bryant, M.D., Lisa N. Richey, B.A., Sahar Jahed, D.O., Amanda Heinzerling, B.S., Daniel A. Stevens, M.D., Ph.D., Benjamin D. Pace, M.S., Jerry Tsai, B.A., Michael J.C. Bray, M.S., Aaron I. Esagoff, B.S., Jaxon Adkins, B.S.E., Ilana Cohen, M.D., Bharat R. Narapareddy, M.D., Carla P. Rodriguez, B.S., Melissa B. Jones, M.D., Carrie Roper, Psy.D., Eric L. Goldwaser, D.O., Ph.D., Katie Lobner, M.L.I.S., Shan Siddiqi, M.D., Haris I. Sair, M.D., Margo Lauterbach, M.D., Licia P. Luna, M.D., Matthew E. Peters, M.D., Nicholas T. Trapp, M.D., M.S.

Background: Behavioral and emotional dyscontrol commonly occur following traumatic brain injury (TBI). Neuroimaging and electrophysiological correlates of dyscontrol have not been systematically summarized in the literature to date. **Objective:** To complete a systematic review of the literature examining neuroimaging and electrophysiological findings related to behavioral and emotional dyscontrol due to TBI. **Methods:** A Preferred Reporting Items for Systematic Reviews and Meta-Analyses-compliant literature search was conducted in PubMed (MEDLINE), PsycINFO, EMBASE, and Scopus databases prior to May 2019. The database query yielded 4392 unique articles. These articles were narrowed based on specific inclusion criteria (e.g., clear TBI definition, statistical analysis of the relationship between neuroimaging and dyscontrol). **Results:** A final cohort of 24 articles resulted, comprising findings from 1552 patients with TBI. Studies included civilian ($n = 12$), military ($n = 10$), and sport ($n = 2$) samples with significant variation in the severity of TBI incorporated. Global and region-based structural imaging was more frequently used to study dyscontrol than functional imaging or diffusion tensor imaging. The prefrontal cortex was the most common neuroanatomical region associated with behavioral and emotional dyscontrol, followed by other frontal and temporal lobe findings. **Conclusions:** Frontal and temporal lesions are most strongly implicated in the development of postinjury dyscontrol symptoms although they are also the most frequently investigated regions of the brain for these symptom

categories. Future studies can make valuable contributions to the field by (1) emphasizing consistent definitions of behavioral and emotional dyscontrol, (2) assessing premorbid dyscontrol symptoms in subjects, (3) utilizing functional or structural connectivity-based imaging techniques, or (4) restricting analyses to more focused brain regions.

(Journal of the Academy of Consultation-Liaison Psychiatry 2022; 63:579–598)

Key words: traumatic brain injury, neuroimaging, impulsivity, aggression, dyscontrol.

Received November 1, 2021; revised May 4, 2022; accepted May 13, 2022. From the Department of Psychiatry & Behavioral Sciences (B.R.B., L.N.R., D.A.S., J.T., M.J.C.B., A.I.E., I.C., C.P.R., M.E.P.), Johns Hopkins University School of Medicine, Baltimore, MD; Department of Psychiatry and Behavioral Medicine (S.J.), Medical College of Wisconsin, Milwaukee, WI; Department of Psychiatry (A.H., B.D.P., N.T.T.), University of Iowa Carver College of Medicine, Iowa City, IA; Louisiana State University (J.A.), Baton Rouge, LA; Hartford HealthCare (B.R.N.), Hartford, CT; Baylor College of Medicine (M.B.J.), Menninger Department of Psychiatry and Behavioral Sciences, One Baylor Plaza - BCM350, Houston, TX; VA Maryland Healthcare System (C.R.), Baltimore, MD; Department of Psychiatry (E.L.G., M.L.), University of Maryland School of Medicine, Baltimore, MD; Sheppard Pratt Health System (E.L.G., K.L., M.L.), Baltimore, MD; Johns Hopkins University School of Medicine (K.L.), Welch Medical Library, Baltimore, MD; Department of Psychiatry (S.S.), Brigham and Women's Hospital, Boston, MA; Department of Radiology and Radiological Sciences (H.I.S., L.P.L.), Johns Hopkins University School of Medicine, Baltimore, MD. Send correspondence and reprint requests to Barry R. Bryant, MD, Johns Hopkins University School of Medicine, Department of Psychiatry & Behavioral Sciences, 600 N Wolfe St, Baltimore, MD 21205; e-mail: bbryan15@jhmi.edu

© 2022 Academy of Consultation-Liaison Psychiatry. Published by Elsevier Inc. All rights reserved.

INTRODUCTION

Traumatic brain injury (TBI) is an alteration in brain function caused by an external force to the head.¹ TBI is common—in the United States alone, 1.4 million people each year sustain a TBI, and approximately 2% of the population is living with a TBI.² New research suggests that TBI is a disease process rather than an isolated event, as it consists of both acute and chronic downstream consequences.³ Due to its severity and chronicity, TBI is a major source of disability both in the United States and worldwide.²

Neuropsychiatric disturbances following TBI account for a significant portion of the disability and impairment associated with the injury. These symptoms can occur acutely after the injury in the context of a posttraumatic encephalopathy or develop more gradually and insidiously after other acute symptoms appear to resolve. Although some acute neuropsychiatric manifestations of TBI, such as coma, delirium, or subsyndromal delirium, are gravely disabling, they are often transient.⁴ After the acute posttraumatic encephalopathy resolves, protracted neuropsychiatric sequelae develop in as many as half the TBI patients.⁵ This review specifically addresses these more chronic neuropsychiatric sequelae of TBI. These symptoms can be either new-onset psychiatric complications or exacerbation of pre-existing, previously well-controlled conditions. Many types of neuropsychiatric symptoms (NPS), including mood changes, personality changes, psychosis, sleep changes, or changes in one's ability to regulate behavior and emotion, can develop after TBI. The inability to regulate behavior and emotion constitutes an impairing class of symptoms described by Arciniegas and Wortzel⁶ and frequently encountered in patients after TBI. This construct, commonly referred to as behavioral and emotional dyscontrol, includes symptoms such as aggression, impulsivity, disinhibition, irritability, affective lability, agitation, and pathologic laughing and crying. It is one of the most challenging consequences of TBI faced by patients and families, and one of the most difficult ones to manage for providers.⁷

Neuroimaging modalities are commonly used in the study of TBI and psychiatric disorders although they are rarely studied in conjunction. For example, TBI has been linked to brain volume loss due to degradation of parenchyma in the acute, subacute, and chronic time periods.⁸ This volume loss has been reported both globally⁹ and in discrete brain regions such

as the caudate.¹⁰ Mild TBI has also been associated with changes in task-mediated activation on functional magnetic resonance imaging in the dorsolateral prefrontal cortex (PFC), ventrolateral PFC, and basal ganglia.⁸

Separately, a growing literature exists attempting to link NPS with their neuroimaging correlates in various disease processes,¹¹ again using both structural and functional imaging techniques. Electroencephalography (EEG) has also been used to correlate electrophysiological findings with NPS. Although EEG is better classified as an electrophysiologic modality, rather than a traditional neuroimaging modality, it can be similarly useful for characterizing and localizing brain-behavior relationships. For conciseness, when neuroimaging is referenced generically in this manuscript, it is referring to both traditional neuroimaging and EEG. Such research on neuroimaging findings associated with NPS of TBI has yet to be systematically compiled. Understanding these relationships has the potential to impact clinical decision-making surrounding post-TBI prognosis and management. For example, one promising study found that cognitive benefits of methylphenidate after TBI were only seen in those patients who had low caudate dopamine transporter levels as measured with ¹²³I-ioflupane single-photon emission computed tomography.¹²

Over the past several years, members of a TBI Special Interest Group comprising clinicians, researchers, and trainees in neuropsychiatry undertook a large research effort designed to systematically review the existing literature on the topic of NPS due to TBI, specifically as they relate to neuroimaging findings. This paper is a product of that larger research effort and focuses on symptoms of behavioral and emotional dyscontrol in the setting of TBI. To our knowledge, this review is the first to summarize the neuroimaging literature investigating behavioral and emotional dyscontrol in those who have experienced TBI. This study will further characterize the relationship between imaging and TBI-related behavioral and emotional dyscontrol through the following aims: (1) identifying literature trends based on imaging modality, (2) highlighting patterns based on pertinent TBI variables (i.e., severity, occurrence, population), (3) describing relevant findings related to neuroimaging in TBI-associated behavioral and emotional dyscontrol, and (4) outlining the current trends in research practice including an assessment of potential bias in common study designs.

MATERIALS AND METHODS

Search Strategy

A structured literature search strategy was designed to identify articles with neuroimaging and NPS components in human TBI samples. Articles were extracted from PubMed (MEDLINE), PsycINFO, EMBASE, and Scopus databases. Boolean searches were kept broad in the interest of reflecting all neuroimaging modalities and in order to capture broad domains of neuropsychiatric symptomatology. A more general approach was also necessitated by the current state of the TBI literature, which comprises many disparate approaches to definition, severity, population, and timing of assessment. We employed 41 imaging-related keywords, 46 NPS-related keywords, and 15 TBI-related keywords. Exact search phrases and Medical Subject Heading search field qualifiers are outlined in [Appendix 1](#). For this particular review on the topic of dyscontrol, we narrowed our search to 19 NPS-related keywords: aggression, agitation, behavioral dyscontrol, disinhibition, emotional dyscontrol, emotional dysregulation, emotional incontinence, forced crying, impulsivity, inappropriate laughter, involuntary crying, involuntary emotional expression disorder, irritability, lability, pathological emotionalism, pathological emotionality, pathological laughing and crying, pathological laughter, and pseudobulbar affect.

Review Protocol

This review adhered to Preferred Reporting Items for Systematic Reviews and Meta-Analyses¹³ guidelines for implementation and reporting of systematic reviews. A summary of the review protocol, including the number of articles included and excluded in each step, can be found in [Figure 1](#). In the first level of the screening process, titles and abstracts were reviewed in parallel for determination of inclusion or exclusion. Individuals in dyads were blind to each other's determinations, and an identical data extraction sheet was utilized by all reviewers. Discrepancies and cases where a reviewer was unsure were routed to a third-party reviewer for a final decision. All included articles were then subjected to a full-text review by dyads, again followed by a reappraisal if necessary. The resulting article cohort was then split up into 6 NPS domains: depression, anxiety, posttraumatic stress disorder, sleep disturbance, behavioral and emotional dyscontrol, and

psychosis. The present review focuses on the NPS domain of behavioral and emotional dyscontrol. A series of subsequent reviews focused on the other NPS domains will be published from these same efforts.

Inclusion and Exclusion Criteria

For both title/abstract and full-text reviews, a standardized set of inclusion and exclusion criteria were applied. Articles were excluded if they (1) lacked any 1 of the 3 key elements (neuroimaging, NPS, or TBI); (2) were of an ineligible study type (i.e., case reports/case series with $n < 5$, editorials, commentary letters, replies to editor, book reviews, non-peer-reviewed articles, conference proceedings, poster abstracts, dissertations); (3) were not written in English; and/or (4) the study population had no human subjects or adult data (≤ 18 years). Articles were *not* judged on the basis of TBI severity, singularity or reoccurrence of TBI, acuity or chronicity of NPS, neuroimaging modality, or if neuroimaging was conducted in the acute, subacute, or chronic time period after TBI. This information was, however, collected on all articles.

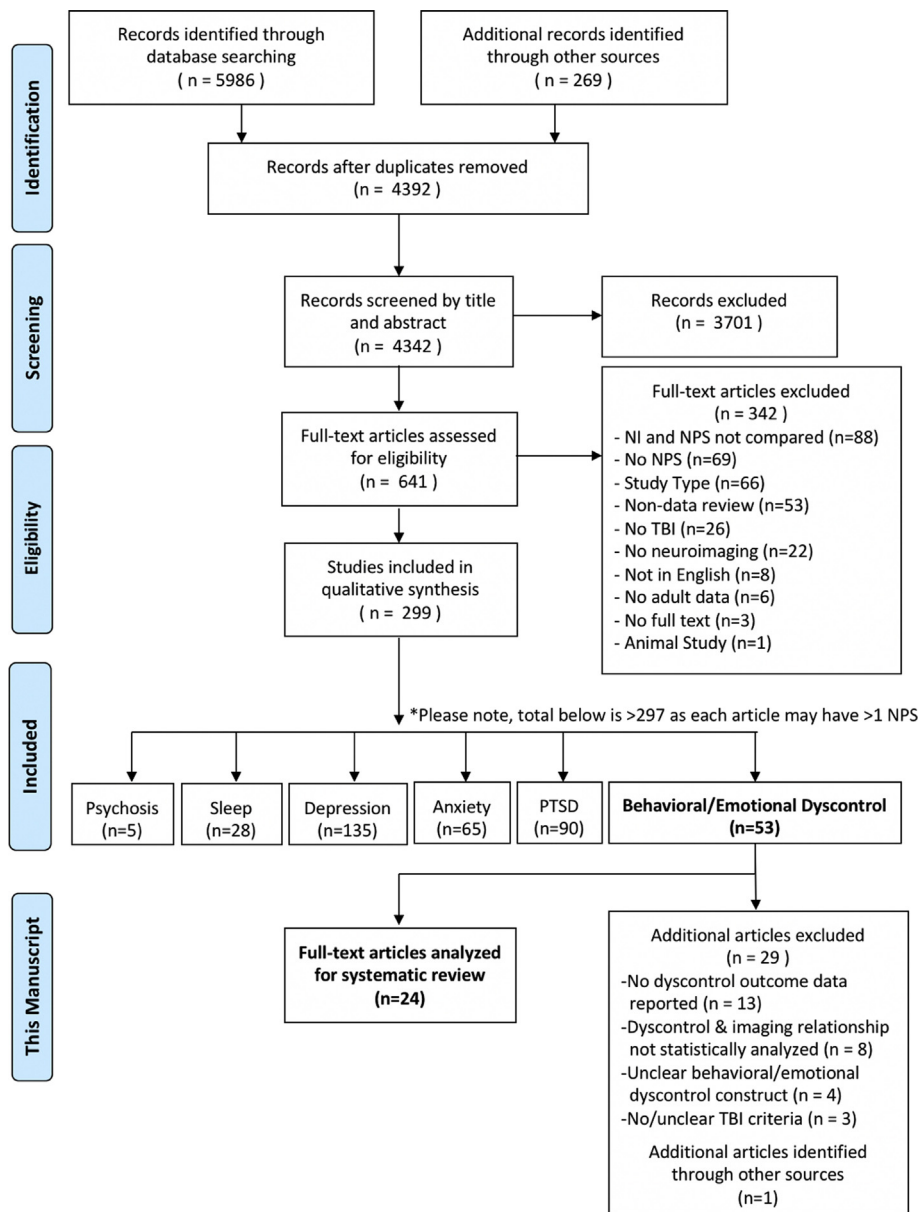
Final articles selected for the present review focused on behavioral and emotional dyscontrol symptoms subsequent to TBI. These articles met all the following additional criteria: (1) statistically analyzed the relationship between neuroimaging findings and behavioral or emotional dyscontrol in individuals with TBI; (2) had a clear TBI definition for participants included in the study (formalized or study-specific criteria with any combination of Glasgow Coma Scale score, loss/alteration in consciousness, and/or posttraumatic amnesia); and (3) reported a clear behavioral or emotional dyscontrol outcome. Articles that satisfied these criteria were then reviewed for individual analyses between behavioral and emotional dyscontrol and neuroimaging findings. These analyses were then organized based on imaging modality, presence or absence of lesion, and neuroanatomical localization. Articles drawing from unique subsamples of the same patient cohort were summed without removal of overlapping data for demographic transparency.

Article Quality Review

Included articles were rated for bias and quality by 2 independent reviewers using the Newcastle-Ottawa Scale,¹⁴ with specific focus on study design as applicable for dyscontrol outcomes of interest. Studies with

Imaging Correlates of Dyscontrol in TBI

FIGURE 1. Article Selection Process. NI = neuroimaging; NPS = neuropsychiatric symptoms; PTSD = post-traumatic stress disorder; TBI = traumatic brain injury.



significant limitation in quality or bias were included in the review with notation of their limitations.

RESULTS

Following application of inclusion and exclusion criteria, the final cohort of articles consisted of 24 studies published between 1986 and 2018. There were a total of 1552 patients with TBI and 335 non-TBI

comparisons represented in the cohort of articles, for an aggregated sample size of 1887. Twenty-two of the 24 articles reported statistically significant findings related to behavioral and emotional dyscontrol.

Population of Interest

Civilian populations (12 articles) were the most commonly studied, followed by military (10 articles), and sport (2 articles).

TBI characteristics

Seven studies included all levels of TBI severity, whereas other articles restricted inclusion to mild TBI (8 articles), severe TBI (4 articles), moderate and severe TBI (4 articles), or mild and moderate TBI (1 article). Thirteen articles studied patients with a singular TBI, 10 articles included participants with either singular or recurrent TBI, and 1 article studied only patients with recurrent TBI.

Chronicity

The majority of articles studied participants using neuroimaging acquired more than 6 months after TBI (13 articles), followed by any time less than 6 months (3 articles), between 2 weeks and 6 months (2 articles), and less than 2 weeks (2 articles). Four articles did not specify the timing of neuroimaging acquisition. For the purposes of evaluating risk of bias, 8 of the articles were formulated as case-control studies, and 16 were evaluated as cohort studies. A summary of article characteristics can be found in [Table 1](#).

Variable	%
Study type	
Case-control	33
Cohort	67
Population	
Civilian	50
Military	42
Sport	8
TBI severity	
Mild	33
Mild & moderate	4
Moderate & severe	17
Severe	17
Any severity	29
TBI occurrence	
Single	54
Recurrent	4
Single & recurrent	42
Imaging timing after TBI*	
Acute/subacute	8
Acute/subacute & intermediate	13
Intermediate & chronic	8
Chronic	54
Unclear	17

TBI = traumatic brain injury.
 * Acute/subacute = 0 h–2 wk, intermediate = 2 wk–6 mo, and chronic ≥6 mo.

Findings by Imaging Modality

Structural Imaging

Key findings are summarized in [Table 2](#), and imaging modality breakdown is displayed in [Figure 2](#). Fifteen of the studies used structural imaging analyses; 6 utilized computed tomography, 6 magnetic resonance imaging, and 3 both computed tomography and magnetic resonance imaging. These studies included 1285 TBI participants and 229 non-TBI comparisons in total. Thirteen of the 15 structural imaging studies reported significant findings relating neuroimaging findings to behavioral and emotional dyscontrol. In studies that investigated nonspecific lesion versus nonlesion, lesions were positively associated with greater impulsivity,²⁶ disinhibition,²⁵ and agitation,³⁶ but not hostility.²⁶ Studies that looked at the brain globally found that traumatic axonal injury (defined as a trauma-induced white matter lesion identified with a combination of imaging modalities) was positively associated with emotional dyscontrol,²⁰ volume loss was positively associated with disinhibition,²⁴ and left, greater than right, hemispheric lesions were positively associated with aggression.¹⁵ Localization of lesions are presented in [Figure 3](#).

The PFC was the most common site of neuroimaging findings associated with dyscontrol. Specifically, 4 studies found positive associations between dyscontrol and lesions to the right orbitofrontal cortex (OFC),^{22–24,28} 1 with the left OFC,²⁸ and 1 with the OFC bilaterally.¹⁶ Another study,¹⁹ however, found that aggression was no longer significantly related to OFC morphometry after Bonferroni correction. One study found that aggression was positively associated with medial PFC lesions.³² Another study found that the bilateral dorsolateral PFC lesions¹⁶ were positively associated with violent attitudes although a contrasting study found a negative association between lateral PFC and aggression.³²

Regarding other brain regions, 6 studies found frontal lesions were positively associated with dyscontrol.^{23–25,33,35,36} Three studies found positive associations between temporal lesions and dyscontrol.^{16,24,36} One contrasting study²¹ found no significant differences in aggression scores between temporal and nontemporal lesion groups. Finally, isolated significant relationships were found between dyscontrol and the bilateral gyrus rectus, bilateral insula, and precentral and postcentral

TABLE 2. Articles Comparing Neuroimaging and Neuropsychiatric Symptoms of Behavioral and Emotional Dyscontrol in Traumatic Brain Injury (*n* = 24)

Article	Study type [†]	Sample size	Population	TBI diagnostic criteria	TBI severity; occurrence	Timing of neuroimaging since TBI	Neuroimaging modality	Neuropsychiatric outcome measure(s)	Key findings*
Borek et al., 2001 ¹⁵	Cohort	98	Civilian	Nonpenetrating brain injury, defined by duration of LOC, GCS, and PTA; severe = LOC >24 h, GCS <9 h, or PTA >1 wk	All (majority severe); single	Unclear	EEG, CT, MRI	Presence/absence of aggression and irritability recorded from case notes	Left hemispheric injury more associated with aggression than right hemispheric lesion (58% vs. 41%, <i>P</i> = 0.02). No association for irritability.
Cristofori et al., 2016 ¹⁶	Case-control	145 (112 TBI, 33 non-TBI)	Military	Penetrating head injuries from the Caveness Vietnam Head Injury Study phase 4	Severe; single	About 40 y	CT	Implicit Association Test (IAT) focused on implicit attitudes toward violence/aggression, Aggression Questionnaire, Attitudes Towards Guns and Violence Questionnaire (AGVQ), State-Trait Anger Expression Inventory (STAXI)	More positive implicit attitude toward violence associated with lesions of the left posterior inferior temporal cortex, bilateral DLPFC, and bilateral OFC. Less positive implicit attitude toward violence associated with lesions of the middle and superior OFC.
Dailey et al., 2018 (a) ¹⁷	Cohort	26 (10 TBI; 16 non-TBI)	Sport	Based on VA/DoD and ACRM criteria (LOC <30 min, PTA <24 h, AOC, focal neurological damage that may or may not be transient)	Mild; both	6 mo or 12 mo	MRI (DTI)	Buss-Perry Aggression Questionnaire (BPAQ), Personality Assessment Inventory (PAI)	Reduced white matter integrity (increased radial diffusivity) in the cc associated with greater aggression on BPAQ total score. Physical aggression associated with higher radial diffusivity and lower fractional anisotropy in splenium of cc. Aggressive attitude associated with higher radial diffusivity in body of cc.
Dailey et al., 2018 (b) ¹⁸	Cohort	34 (17 TBI, 17 non-TBI)	Civilian	Based on ACRM and VA DoD criteria (GCS = 13–15, LOC <30 min, PTA <24 h, transient AOC)	Mild; single	≥6 mo (M = 290.40 d, SD = 91.87)	rsfMRI	Buss-Perry Aggression Questionnaire (BPAQ)	Elevated aggression associated with increased right hippocampus to midcingulate cortex connectivity in TBI compared to controls.

TABLE 2. (Continued)

Article	Study type [†]	Sample size	Population	TBI diagnostic criteria	TBI severity; occurrence	Timing of neuroimaging since TBI	Neuroimaging modality	Neuropsychiatric outcome measure(s)	Key findings*
Epstein et al., 2016 ¹⁹	Case-control	82 (55 TBI, 27 non-TBI)	Military	OSU TBI-ID (injury to the head followed by AOC or LOC); ACRM guidelines (dizziness, confusion, or LOC <30 min and PTA <24 h)	Mild; both	≥12 mo (M = 107.3 mo, SD = 93.3 mo)	MRI (MPRAGE)	Buss-Perry Aggression Questionnaire (BPAQ)	Aggression was not significantly related to OFC morphometry after Bonferroni correction.
Finnanger et al., 2015 ²⁰	Cohort	139 (67 TBI, 72 non-TBI)	Civilian	Head Injury Severity Scale (HISS) criteria	Moderate, severe; single	Median = 10 d, range = 1–120 d	MRI	Behavioral Regulation Index including inhibition and emotional control subscales (BRIEF-A), Achenbach System of Empirically Based Assessment (ASEBA) Adult Self-Report form	Presence of traumatic axonal injury on MRI correlated with total scores on BRIEF-A and ASEBA Adult Self-Report form.
Formisano et al., 1991 ²¹	Cohort	48	Civilian	LOC/AOC 3 wk to 2 mo, Innsbruck Coma Scale (Gerstenbrand 1982) score 15–20, GCS 3–9	Severe; single	1–2 y	CT	Fragebogen zur Erfassung von Aggressivitätsfaktoren (FAF)	No significant differences in FAF scores between temporal and nontemporal groups; no pathologic scores in any group.
Goswami et al., 2016 ²²	Cohort	36 (19 TBI, 17 non-TBI)	Sport	Patient self-report operationalized by the International Consensus Statements	Mild; recurrent	Unclear	MRI (DTI), rsfMRI	Personality Assessment Inventory (PAI) aggression scale, Sustained Attention to Response Task (SART)	Negative correlation between right OFC thickness and aggression, impulsivity (via task errors on go/no-go); negative correlation between uncinate fasciculus axial diffusivity and aggression; impulsivity (via task errors on go/no-go). rsfMRI Showed no significant associations between left/right OFC and left/right ATL.

TABLE 2. (Continued)

Article	Study type [†]	Sample size	Population	TBI diagnostic criteria	TBI severity; occurrence	Timing of neuroimaging since TBI	Neuroimaging modality	Neuropsychiatric outcome measure(s)	Key findings*
Grafman et al., 1986 ²³	Cohort	103 (52 TBI; 51 non-TBI)	Military	Vietnam Head Injury Study criteria; presence of lesion on neuroimaging	Moderate, severe; both	About 15–20 y	CT	Profile of mood states (“ready to fight”, “angry”, “grouchy”, “bad-tempered”, “rebellious”)	Patients with left dorsofrontal lesions more likely to endorse “angry”, “ready to fight”, “grouchy”, “bad-tempered” compared to left OFC, nonfrontal, control groups; right OFC more “angry”, “ready to fight”, “grouchy” than left OFC, bilateral OFC, right dorsofrontal or nonfrontal lesions, or controls.
Knutson et al., 2015 ²⁴	Cohort	177	Military	Caveness Vietnam Head Injury Study Phase 3	All; Both	33–39 y	CT	Neuropsychiatric Inventory (NPI) behavioral disinhibition scale	Disinhibition scores showed associations with lesions to the right OFC, bilateral insula, right temporal lobe, left frontal, precentral and postcentral regions, and bilateral gyrus rectus. Patients with higher disinhibition scores also had a greater percentage of volume loss throughout the brain in general.
Koponen et al., 2006 ²⁵	Cohort	58	Civilian	Head trauma causing neurologic symptoms (headache and nausea) at ≥ 1 wk and at least 1 of the following: LOC ≥ 1 min, PTA ≥ 30 min, neurological symptoms (other than headache and nausea) in first 3 d after injury, neuroradiological findings	All (plus very severe); both	M = 31.5 y	MRI	“Organic personality syndrome” assessed using DSM-III-R criteria (labile, aggressive, disinhibited subtypes)	Presence of contusions on MRI associated with disinhibited organic personality syndrome. Frontal lesions associated with organic personality syndrome and disinhibited subtype.

TABLE 2. (Continued)

Article	Study type [†]	Sample size	Population	TBI diagnostic criteria	TBI severity; occurrence	Timing of neuroimaging since TBI	Neuroimaging modality	Neuropsychiatric outcome measure(s)	Key findings*
Lee <i>et al.</i> , 1997 ²⁶	Cohort	72 (41 with CNS lesions, 31 without)	Civilian	Admitted to emergency department for head injury following traffic accident, patient/family member report of trauma history	All; single	≥5 mo	MRI	Barratt Impulsiveness Scale (BIS); Symptom Checklist 90-R (SCL-90-R)	Nonplanning impulsivity more associated with brain lesions vs. no-lesion group. No significant difference between lesion and nonlesion groups for SCL-90-R hostility measure.
Lopez-Larson <i>et al.</i> , 2013 ²⁷	Case-control	74 (40 TBI only, 19 TBI + suicidal behavior, 15 non-TBI)	Military	Report of an injury event to the head followed by AOC or LOC ≤30 min; OSU TBI-ID	Mild; both	Unclear	MRI (DTI)	BIS	Positive correlation between BIS total score and right anterior thalamic radiation fractional anisotropy. Positive regressions found for fractional anisotropy of the bilateral anterior thalamic radiation and BIS total, BIS planning, and BIS attention.
McGlade <i>et al.</i> , 2015 ²⁸	Cohort	41	Military	OSU TBI-ID; Patient report of head injury followed by AOC or LOC; Belanger <i>et al.</i> , 2009 criteria (mild = AOC ≤24 h or LOC ≤30 min.; moderate = AOC 24 h to 7 d or LOC 30 min. to 24 h; severe = AOC >7 d or LOC >24 h)	All; Both	Unclear	MRI	Buss-Perry Aggression Questionnaire (BPAQ) physical aggression subscale, Displaced Aggression Questionnaire (DAQ) revenge planning scale, Profile of Mood States (POMS)	All in males only: BPAQ associated with decreased left OFC to left angular gyrus connectivity; DAQ associated with increased right OFC to right cerebellum and right angular gyrus connectivity, as well as associated with decreased right OFC to right mid-occipital cortex connectivity.
Moore <i>et al.</i> , 2016 ²⁹	Cohort	81 (52 TBI, 29 non-TBI)	Military	American Academy of Neurology criteria	Mild; both	11–50 mo (M = 22.5 mo)	EEG	Profile of Mood States (anger/hostility)	Frontal beta asymmetry on EEG associated with self-reported anger/aggression in athletes after concussion.

TABLE 2. (Continued)

Article	Study type [†]	Sample size	Population	TBI diagnostic criteria	TBI severity; occurrence	Timing of neuroimaging since TBI	Neuroimaging modality	Neuropsychiatric outcome measure(s)	Key findings*
Nathan et al., 2015 ³⁰	Cohort	27 (15 TBI, 12 non-TBI)	Military	Based on VA/DoD Criteria (PTA <24 h, LOC <15 min)	Mild; single	2–10 mo (M = 147 d)	rsfMRI	Personality Assessment Inventory (PAI) aggression and borderline feature scales	Aggression scores correlated with right cerebellar lobule VII spatial information within default mode network; borderline features correlated with left cerebellar lobule I–IV.
Oder et al., 1992 ³¹	Case-control	36	Civilian	Closed head injury based on GCS	Severe; single	Within 2 mo	SPECT	Giessen test (disinhibition and aggression components)	Disinhibited behavior was associated with low regional cerebral blood flow in the frontal lobes. Aggressive behavior was associated with low blood flow in right brain regions.
Pardini et al., 2014 ³²	Cohort	170 (141 TBI, 29 non-TBI)	Military	Penetrating TBI; Caveness Vietnam Head Injury Study phase 3	Moderate, severe; single	36–39 y	CT	NPI agitation and aggression subscale	ANCOVA on NPI revealed an interaction effect for dopamine receptor D1 genotype × lesion location; no significant main effects for lesion location group. Dopamine receptor D1 carriers had higher NPI scores than G/G carriers in the medial PFC group and lower NPI scores in the lateral PFC group. ANCOVA on NPI scores for dopamine receptor D2 × lesion location and catechol-O-methyltransferase × lesion location showed no significant main effects, interaction effects, or covariate effects with other genotypes.

TABLE 2. (Continued)

Article	Study type†	Sample size	Population	TBI diagnostic criteria	TBI severity; occurrence	Timing of neuroimaging since TBI	Neuroimaging modality	Neuropsychiatric outcome measure(s)	Key findings*
Spikman et al., 2016 ³³	Cohort	186	Civilian	GCS 9–12 (moderate TBI) or GCS 3–8 (severe TBI)	Moderate, severe; Single	Upon presentation to emergency department	CT	Presence/absence of anger as reported on study-specific structured survey	Patient and proxy ratings of anger were higher for the frontal TBI group as opposed to the nonfrontal group.
Stern et al., 2004 ³⁴	Case-control	37	Civilian	LOC <24 h, GCS 13–15, normal CT scan, normal skull x-ray, and EEG with no focal signs	Mild; single	M = 21 mo	EEG	"Extraverted-aggressive" classification by semi-structured interview	Enhanced alpha/theta ratio in the frontal and parietal leads for extraverted aggressive group vs. introverted-withdrawn and low-complaint groups.
Tateno et al., 2004 ³⁵	Case-control	92	Civilian	GCS, PTA	All	Upon admission for TBI	CT, MRI	PLC Scale	Patients with PLC had a greater frequency of frontal lobe injury than patients without PLC ($P = 0.04$). Diffuse lesions were more common in the no-PLC group. No significant between-group differences in frequency of lesions in other brain areas. Lateral aspect of the left frontal lobe was associated with the presence of PLC with logistic regression analysis ($P = 0.03$).

TABLE 2. (Continued)

Article	Study type [†]	Sample size	Population	TBI diagnostic criteria	TBI severity; occurrence	Timing of neuroimaging since TBI	Neuroimaging modality	Neuropsychiatric outcome measure(s)	Key findings*
Van Der Naalt, et al., 2000 ³⁶	Cohort	67	Civilian	GCS 9–14, PTA >1 h	Mild, moderate; single	Median = 45 d, range: <1 h to 3 mo	CT, MRI	Presence/absence of agitation, inappropriate behavior as reported by nurse and/or treating physician clinical observation	Agitation was related to lesions on CT and number of lesions. A similar relationship was seen for relating symptoms to presence and number of lesions on MRI for agitation and inappropriate behavior. More than 2x as many lesions were seen on MRI and CT for patients with restlessness and/or agitation compared to patients without behavioral disturbance. Restlessness, agitation, and inappropriate behavior were associated with more frontotemporal lesions on CT and MRI (approximately half of patients with behavioral disturbance).
Yamaki et al., 2018 ³⁷	Case-control	26	Civilian	Field GCS \leq 8 and severe verbal disturbance	Severe; both	M = 623 d	18F-FDG-PET/CT	Brief Psychiatric Rating Scale (BPRS) uncooperativeness subscale	Thalamic glucose metabolism imbalanced (R > L) and lateralized in 6 patients who exhibited uncooperativeness.

TABLE 2. (Continued)

Article	Study type [†]	Sample size	Population	TBI diagnostic criteria	TBI severity; occurrence	Timing of neuroimaging since TBI	Neuroimaging modality	Neuropsychiatric outcome measure(s)	Key findings*
Yurgelun-Todd et al., 2011 ³⁸	Case-control	32 (15 TBI, 17 non-TBI)	Military	Patient report of injury to the head followed by AOC or LOC; OSU TBI; mild = LOC ≤30 min, moderate/severe = LOC >30 min.	All; both	104.5–192.2 mo	MRI (DTI)	BIS	Total cingulum fractional anisotropy, right genu fractional anisotropy, and right cingulum fractional anisotropy positively correlated with BIS total score; total cingulum and right genu correlated with BIS attention subscale measures of impulsivity; right genu fractional anisotropy positively correlated with BIS planning subscale.

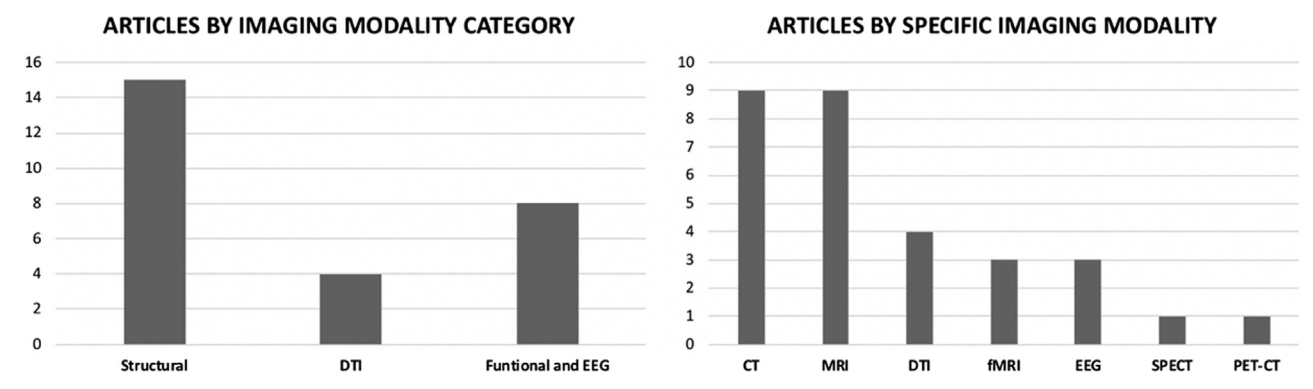
18F-FDG-PET = 18F fluorodeoxyglucose positron emission tomography; ACRM = American Congress of Rehabilitation Medicine; ANCOVA = analysis of covariance; AOC = alteration of consciousness; ATL = anterior temporal lobe; BIS = Barratt Impulsiveness Scale; cc = corpus callosum; CNS = central nervous system; CT = computed tomography; DLPFC = dorsolateral prefrontal cortex; DSM-III-R = Diagnostic and Statistical Manual of Mental Disorders - 3rd Edition Revised; DTI = diffusion tensor imaging; EEG = electroencephalogram; GCS = Glasgow Coma Scale; LOC = loss of consciousness; M = mean; MRI = magnetic resonance imaging; MPRAGE = magnetization-prepared rapid gradient-echo; non-TBI = controls without traumatic brain injury; OFC = orbitofrontal cortex; OSU TBI-ID = Ohio State University TBI Identification Method; PFC = prefrontal cortex; PLC = pathological laughing and crying; PTA = posttraumatic amnesia; rsfMRI = resting-state functional magnetic resonance imaging; SD = standard deviation; SPECT = single-photon emission computerized tomography; TBI = traumatic brain injury; VA/DoD = Veterans Affairs/Department of Defense.

* Key findings are statistically significant unless otherwise noted.

† Study type as it applies to outcome of interest may be different from the overall study design.

Imaging Correlates of Dyscontrol in TBI

FIGURE 2. Findings Stratified by Imaging Modality. CT = computed tomography; DTI = diffusion tensor imaging; fMRI = functional MRI; MRI = magnetic resonance imaging; PET-CT = positron emission tomography computed tomography; SPECT = single-photon emission computerized tomography.



regions,²⁴ as well as the left and right angular gyri, right cerebellum, and right midoccipital cortex.²⁸

Diffusion Tensor Imaging

Four of the studies used diffusion tensor imaging analyses. These studies included 103 TBI participants and 65 non-TBI comparisons in total. All 4 diffusion tensor imaging studies reported significant findings relating neuroimaging findings to behavioral and emotional dyscontrol. One study¹⁷ found that greater aggression (Buss-Perry Aggression Questionnaire) was positively correlated with increased radial diffusivity in the corpus callosum; physical aggression in particular was associated with increased diffusivity in the splenium, while aggressive attitude was associated with increased diffusivity in the body of the corpus callosum. A second study showed an association of decreased uncinate fasciculus axial diffusivity with increased aggression and impulsivity scores.²² The remaining 2 studies found that fractional anisotropy was positively correlated with impulsivity (Barratt Impulsiveness Scale). One²⁷ found the correlation for both the right and bilateral anterior thalamic radiations, while the other³⁸ noted the same relationship for the total cingulum, right cingulum, and right genu.

Functional Imaging and EEG

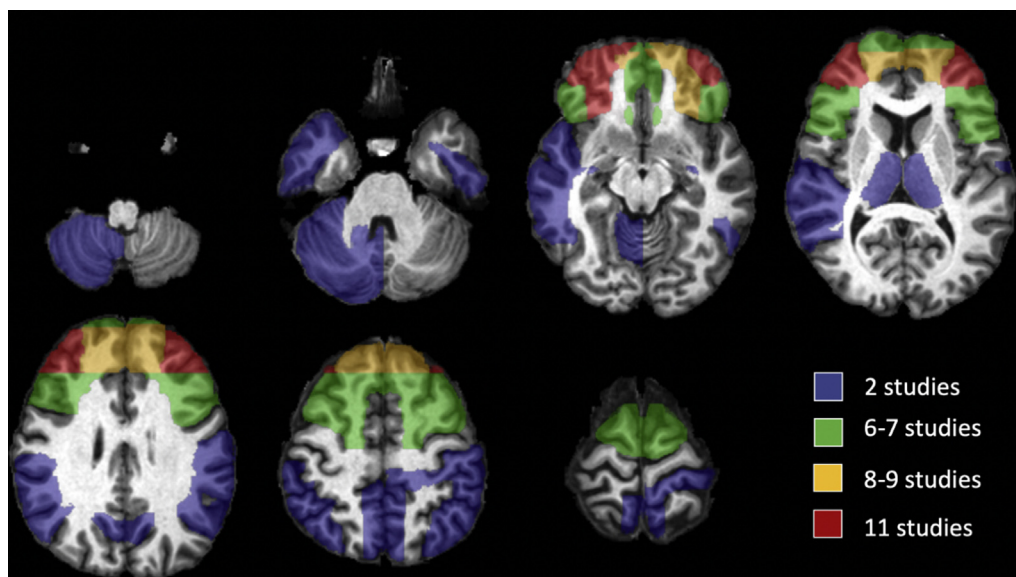
Five of the studies used functional imaging analyses; 3 utilized functional magnetic resonance imaging, 1 single-photon emission computed tomography, and 1 positron emission tomography. Three more studies utilized EEG. Collectively, these 8 studies included 300

TBI participants and 75 non-TBI comparisons. Seven of the 8 studies reported significant findings related to behavioral and emotional dyscontrol. Two of the 3 resting-state functional magnetic resonance imaging studies showed significant results—1 found aggression was positively associated with increased right hippocampus to midcingulate cortex connectivity,¹⁸ and another found aggression was positively associated with connectivity between the right cerebellar lobule VII region and the default mode network.³⁰ A third study examined left and right OFC to anterior temporal lobe connectivity and found no association with aggression.²² Both studies that utilized EEG exclusively^{29,34} found frontal lobe abnormalities to be positively associated with aggression. The single-photon emission computed tomography study³¹ similarly found that low regional cerebral blood flow in the frontal lobes was positively associated with disinhibited behavior. The positron emission tomography-computed tomography study³⁷ found that right lateralized thalamic glucose metabolism was positively associated with uncooperativeness.

Quality Metrics

The Newcastle-Ottawa Scale results are shown in [Figure 4](#). Risk of bias for each criterion was considered to be high for explicit failure to meet the criterion or if the reporting was unclear. Notable areas of high risk for potential bias introduction across cohort studies included 14 of 16 studies failed to demonstrate that the outcome of interest was not present at the start of the study; 10 of 16 studies did not clearly delineate adequate follow-up; and

FIGURE 3. Brain Map Representing the Approximate Locations of Replicated Neuroimaging Findings in TBI-related Behavioral and Emotional Dyscontrol.



10 of 16 studies had an exposed cohort that was not clearly representative of the community of interest. For case-control studies, the most common areas of potential bias introduction included 8 of 8 studies failed to adequately report nonresponse rates; 5 of 8 did not provide adequate case definition; and 4 of 8 studies did not have cases that were clearly representative of the community of interest.

DISCUSSION

This systematic review summarizes the literature on neuroimaging correlates of TBI-associated behavioral and emotional dyscontrol. The conceptualization of this symptom cluster was based largely on a construct championed in the literature by Arciniegas and Wortzel.⁶ This review is part of a larger project that outlines the neuroimaging correlates of several NPS that commonly present after TBI.

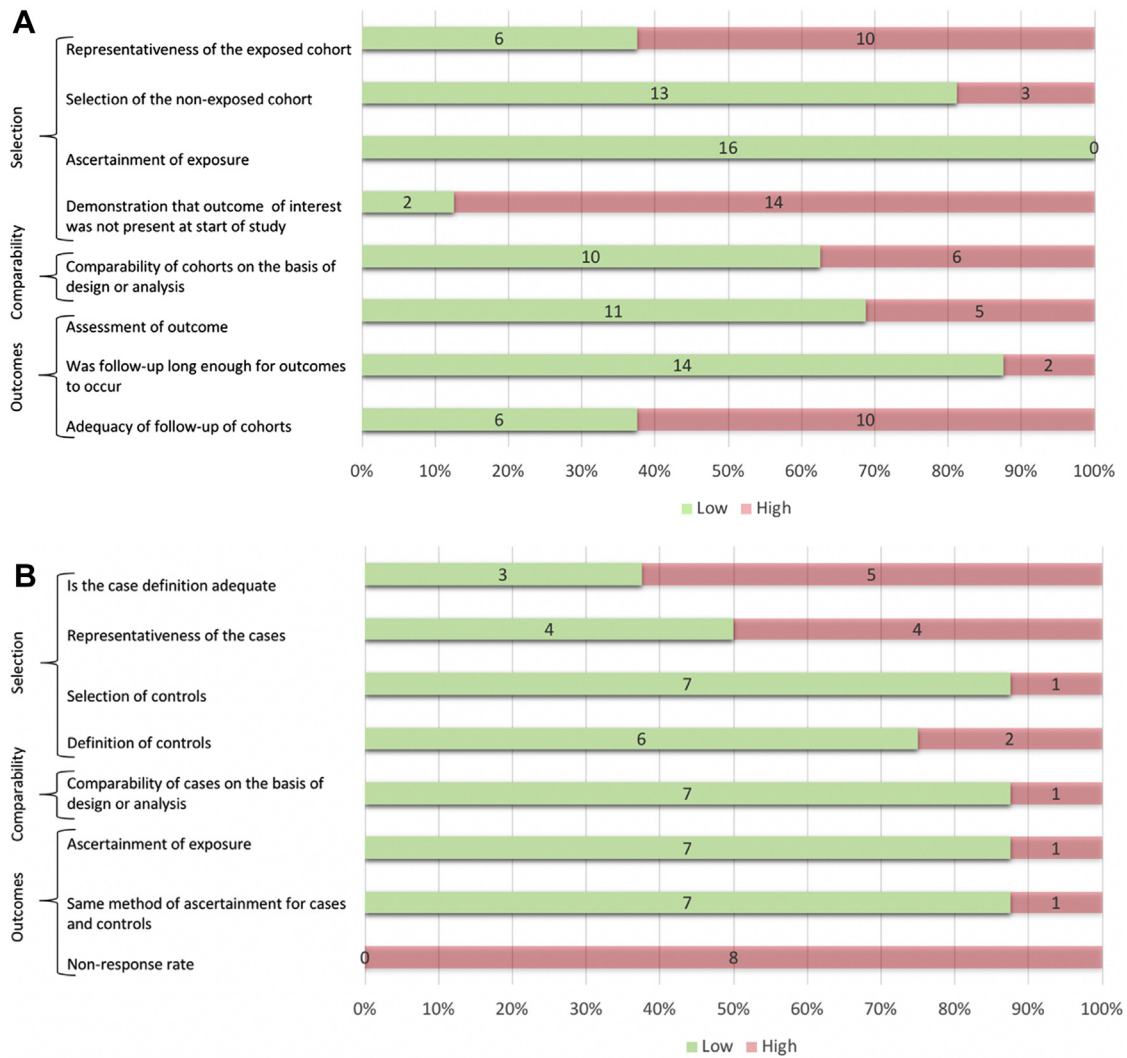
The findings of this review support several conclusions. First, they strengthen the notion that NPS such as behavioral and emotional dyscontrol have identifiable imaging correlates. The studies discussed here suggest that patients who have an identifiable structural lesion on neuroimaging following TBI are more likely to experience behavioral and emotional dyscontrol than patients who have no identifiable lesion. This is of significant clinical

relevance as impulsivity following TBI, especially in the setting of emotional dysregulation or depression, can contribute to greater suicide risk as discussed by Lopez-Larson *et al.* (2013).²⁷

Second, this review recapitulates previous work suggesting that dyscontrol symptoms are a common subtype of personality disturbance after frontal lobe injury.³⁹ The PFC was the neuroanatomical location most commonly associated with neuroimaging changes in subjects demonstrating behavioral and emotional dyscontrol symptoms after TBI. The OFC in particular had 6 positive associations with dyscontrol.^{16,22–24,28} The orbitofrontal circuit has been described as the “neocortical representation of the limbic system” and helps to determine the appropriate time, place, and strategy for environmentally elicited behavioral responses.⁴⁰ It is no surprise then that abnormalities or damage in this neuroanatomical region would lead to dysregulated behavioral and emotional responses to stimuli.⁴¹ Moreover, the term disinhibition syndrome has been used to describe a similar cluster of symptoms including emotional lability and impulsivity, reminiscent of features seen in mania, attention-deficit hyperactivity disorder, antisocial and borderline personality disorders, and substance abuse.⁴² Disinhibition syndrome results from disruption of the OFC, which is again consistent with the findings of the present review.

Imaging Correlates of Dyscontrol in TBI

FIGURE 4. A: Sources of Bias in Cohort Studies (n = 16). B: Sources of Bias in Case-Control Studies (n = 8).



Additionally, frontal lobe was the most common location of abnormalities associated with behavioral and emotional dyscontrol observed in functional neuroimaging. A previous systematic review by Brower and Price found that the literature supports an association between frontal lobe dysfunction and increased aggressive and antisocial behavior.⁴³ Despite this strong association between the PFC and dyscontrol, we must keep in mind that various other subtypes of personality change, including executive dysfunction, depression, hypoemotionality, and apathy, can occur following prefrontal injury.³⁹ Such findings highlight the importance of continued neuroimaging research focusing on more spatially and functionally specific

brain regions in order to analyze the unique and complex personality changes that can occur following a TBI or other brain lesions affecting the frontal lobe.

A third conclusion from this review is that temporal lobe structures are also frequently implicated in dyscontrol syndromes, often in combination with the frontal lobe. These results are consistent with findings in frontotemporal degenerative illnesses, such as Pick disease, nonspecific frontotemporal degeneration, and motor neuron disease, or postsurgical effects in those regions.⁴⁴ For example, Alsemari and Malloy found that dyscontrol symptoms were more prevalent in frontotemporal dementia than in both Alzheimer disease and non-TBI controls.⁴⁵

Some studies in this review also implicate brain regions in post-TBI dyscontrol disorders which are less expected, such as the cerebellum.²⁸ This is consistent with the previously mentioned work of Alsemari and Malloy, which showed that cerebellar changes identified with both structural and functional imaging are associated with dyscontrol.⁴⁵ This is consistent with literature on cerebellar cognitive affective syndrome,⁴⁶ a neuropsychiatric presentation of cerebellar dysfunction or stroke⁴⁷ involving emotional dyscontrol and aggression in addition to deficits in executive function, visuospatial cognition, and language.⁴⁸

Another noteworthy observation from this review is that the studies included are highly heterogeneous in terms of the tools used to measure dyscontrol, the tools used for neuroimaging, and the details of the TBI itself and the population being studied. For example, 20 different measures of dyscontrol were employed across the 23 studies, making generalization of findings across studies challenging. These different measures have different methods for categorizing and classifying dyscontrol and its associated findings. Moreover, there were variations in the definitions of agitation and aggression in different studies included in this review, as well as differences among subtypes of behavioral and emotional dyscontrol. A unique challenge among these studies is that behavioral and emotional dyscontrol outcome measures are often self-report scales (or report from a close relative or proxy). Heterogeneity among statistical methods and sample sizes further complicated the task of objectively comparing statistical associations or the lack thereof. In order to mitigate the impact of this limitation, the articles underwent quality review using the Newcastle-Ottawa Scale, and each of their sample sizes is listed in [Table 2](#). An effort was made to limit the scope of this paper to reduce some of this variability. Consequently, this review did not look at cognitive or task-based measures of disinhibition or executive dysfunction, which was formulated as a separate symptom category. Finally, this paper excluded studies that focused on depression or anxiety as outcomes—although these symptom clusters could broadly be considered emotional dyscontrol entities, we reserve examination of them individually and in greater detail elsewhere.

In terms of variability in imaging across studies, a notable observation is the variation in chronicity of TBI at the time of imaging. Some studies used imaging taken immediately after the TBI, others used imaged

taken more than 6 months after the TBI, and still others used neuroimaging from a more variable range of time points. A paper from Han *et al.* concluded that apolipoprotein E showed compensatory changes in the first 3 years following TBI.⁴⁹ This is important for our review, as variations in timing of neuroimaging may elucidate different aspects of TBI, whether they be the immediate effects of TBI or subsequent compensatory changes. The use of different imaging modalities such as magnetic resonance imaging, computed tomography, EEG, and functional imaging modalities to study TBI-associated changes also contributes to the difficulty of comparing results across studies.

The variable aspects of TBI chronicity and severity are also outlined in detail in [Table 2](#). These studies looked at subjects with TBIs of various severities and frequencies, with various definitions for what was classified as a TBI, and at symptoms observed after TBI over varying lengths of time. All these factors make generalizable conclusions difficult if not impossible to draw. This does, however, help to guide future research in this topic area by providing researchers with a list of important factors to consider and control for in designing new studies.

The Newcastle-Ottawa Scale¹⁴ was applied in this study to offer a general idea of where the challenges and opportunities lie for future work in neuroimaging correlates of TBI-associated dyscontrol symptoms. Notably, the scale was applied based on the article's study design as it applied to our outcome of interest. As such, some studies were formulated as case-control or used a cohort design based on which it most closely resembled in regard to the dyscontrol and imaging associations. This scale served to further highlight some of the research challenges mentioned previously and also identified additional areas for improvement. First, very few of the studies in our review accounted for premorbid functioning or personality traits in the study population. This makes it impossible to know with certainty to what degree the dyscontrol symptoms result from TBI or neuroimaging changes. Future work should consider prospective studies in high-risk TBI populations, looking at premorbid neuroimaging and neuropsychiatric functioning, to minimize this complicating factor and also provide a highly similar non-TBI comparison group.

Second, among these studies, many were studies of convenience samples or retrospective studies that took advantage of available data on TBI patients or took a subsample of data from a larger cohort study. This raises

Imaging Correlates of Dyscontrol in TBI

concern for potential sampling bias and generalizability. For example, many articles had study populations that included only male participants or veterans and thus were poorly representative of the TBI population as a whole. Prospective studies again could mitigate some of these problems although an inherent problem in this research will always be the inability to ethically “randomize” patients to a TBI exposure. Finally, this review revealed potential reporting bias for studies with positive results, as only 2 of 23 articles reported negative results.

This paper offers a review of neuroimaging findings and modalities studied in behavioral and emotional dyscontrol disorders following TBI. Neuroimaging is becoming one of the most common tools for studying the pathophysiological underpinnings of neuropsychiatric illnesses. As the field grows ever more sophisticated, imaging techniques discussed in this paper are now being utilized in combination, with multimodal neuroimaging improving our understanding of clinical symptoms.⁵⁰ However, the present study did find a surprising lack of white matter tract connectivity or functional imaging results. Both areas represent promising avenues for future research.

CONCLUSIONS

In summary, we performed a systematic review of neuroimaging literature examining TBI and co-occurring behavioral and emotional dyscontrol. We found that the majority of studies focused on global/regional structural neuroimaging and that the PFC is the neuroanatomical region most frequently associated with dyscontrol symptoms. Future studies that place additional emphasis on consistent definitions of behavioral and emotional dyscontrol symptoms, as well as those that account for premorbid functioning, will be valuable contributions to the literature.

CRedit AUTHORSHIP CONTRIBUTION STATEMENT

Barry R. Bryant: Conceptualization, Methodology, Validation, Formal analysis, Investigation, Writing – original draft, Writing – review & editing, Visualization, Project administration. **Lisa N. Richey:** Conceptualization, Methodology, Formal analysis, Investigation, Writing – original draft, Writing – review & editing, Visualization, Project administration. **Sahar Jahed:** Conceptualization,

Methodology, Writing – original draft, Writing – review & editing. **Amanda Heinzerling:** Methodology, Validation, Investigation, Writing – original draft, Writing – review & editing, Visualization. **Daniel A. Stevens:** Conceptualization, Methodology, Writing – original draft, Writing – review & editing. **Benjamin D. Pace:** Formal analysis, Investigation, Writing – original draft, Writing – review & editing. **Jerry Tsai:** Conceptualization, Methodology, Writing – review & editing, Visualization. **Michael J.C. Bray:** Conceptualization, Methodology, Writing – review & editing. **Aaron I. Esagoff:** Methodology, Writing – review & editing, Visualization. **Jaxon Adkins:** Methodology, Formal analysis, Investigation, Writing – review & editing. **Ilan Cohen:** Conceptualization, Methodology, Writing – review & editing. **Bharat R. Narapareddy:** Conceptualization, Methodology, Writing – review & editing. **Carla P. Rodriguez:** Conceptualization, Methodology, Writing – review & editing. **Melissa B. Jones:** Conceptualization, Methodology, Writing – review & editing. **Carrie Roper:** Conceptualization, Methodology, Writing – review & editing. **Eric L. Goldwaser:** Conceptualization, Methodology, Writing – review & editing. **Katie Lobner:** Conceptualization, Methodology, Writing – review & editing. **Shan Siddiqi:** Conceptualization, Methodology, Writing – review & editing. **Haris I. Sair:** Writing – review & editing, Visualization. **Margo Lauterbach:** Conceptualization, Methodology, Writing – review & editing. **Licia P. Luna:** Conceptualization, Methodology, Formal analysis, Writing – review & editing, Visualization. **Matthew E. Peters:** Conceptualization, Methodology, Formal analysis, Writing – review & editing, Visualization, Project administration. **Nicholas T. Trapp:** Conceptualization, Methodology, Validation, Formal analysis, Investigation, Writing – original draft, Writing – review & editing, Visualization, Project administration.

SUPPLEMENTARY DATA

Supplementary data related to this article can be found at <https://doi.org/10.1016/j.jaclp.2022.05.004>.

Conflicts of Interest: The authors declare that they have no conflict of interest.

Funding: This research did not receive any specific grant from funding agencies in the public, commercial, or not-for-profit sectors. N. T. T. is supported in general by departmental funding from the Department of

Psychiatry at the University of Iowa, Iowa City, IA, and the INSPIRE Training Grant 5T32MH019113.

Disclosure: The authors report no proprietary or commercial interest in any product mentioned or concept discussed in this article.

Acknowledgments: The study team would like to thank Akshay Krieg, B.S., William Tobolowsky, M.D., Allison Bailey, M.D., Gardner McCullough, LMSW, Tejus Pradeep, M.D., Alexandra Pletnikova, B.S., and Emily Berich-Anastasio, MPH, for their meaningful contributions to the work presented in this manuscript.

References

- Menon DK, Schwab K, Wright DW, Maas AI: Position statement: definition of traumatic brain injury. *Arch Phys Med Rehabil* 2010;1637–1640
- Prevention C for DC and: report to Congress on traumatic brain injury in the United States: Epidemiology and Rehabilitation. *CDC NIH Rep Congress* 2015; 113(2):399–400
- Masel BE, DeWitt DS: Traumatic brain injury: a disease process, not an event. *J Neurotrauma* 2010; 27:1529–1540
- Slooter AJC, Otte WM, Devlin JW, et al: Updated nomenclature of delirium and acute encephalopathy: statement of ten Societies. *Intensive Care Med* 2020; 46:1020–1022
- Koponen S, Taiminen T, Portin R, et al: Axis I and II psychiatric disorders after traumatic brain injury: a 30-year follow-up study. *Am J Psychiatry* 2002; 159:1315–1321
- Arciniegas DB, Wortzel HS: Emotional and behavioral dyscontrol after traumatic brain injury. *Psychiatr Clin North Am* 2014; 37:31–53
- Rochat L, Beni C, Billieux J, Annoni JM, Van Der Linden M: How impulsivity relates to compulsive buying and the burden perceived by caregivers after moderate-to-severe traumatic brain injury. *Psychopathology* 2011; 44:158–164
- Bigler ED: Traumatic brain injury, neuroimaging, and neurodegeneration. *Front Hum Neurosci* 2013; 395
- Zhou Y, Kierans A, Kenul D, et al: Mild traumatic brain injury: Longitudinal regional brain volume changes. *Radiology* 2013; 267:880–890
- Bernick C, Banks S: What boxing tells us about repetitive head trauma and the brain. *Alzheimer's Res Ther* 2013; 5:23
- Boublay N, Schott AM, Krolak-Salmon P: Neuroimaging correlates of neuropsychiatric symptoms in Alzheimer's disease: a review of 20 years of research. *Eur J Neurol* 2016:1500–1509
- Jenkins PO, De Simoni S, Bourke NJ, et al: Stratifying drug treatment of cognitive impairments after traumatic brain injury using neuroimaging. *Brain* 2019; 142:2367–2379
- Liberati A, Altman DG, Tetzlaff J, et al: The PRISMA statement for reporting systematic reviews and meta-analyses of studies that evaluate healthcare interventions: explanation and elaboration. *BMJ* 2009; 339:b2700
- Deeks J, Dinnes J, D'Amico R, Sowden A, Sakarovitch C: Evaluating non-randomised intervention studies. *Health Technol Assess* 2003; 7(27):iii–x. 1-173
- Borek LL, Butler R, Fleminger S: Are neuropsychiatric symptoms associated with evidence of right brain injury in referrals to a neuropsychiatric brain injury unit? *Brain Inj* 2001; 15:65–69
- Cristofori I, Zhong W, Mandoske V, et al: Brain regions influencing Implicit violent attitudes: a lesion-Mapping study. *J Neurosci* 2016; 36:2757–2768
- Dailey NS, Smith R, Bajaj S, et al: Elevated aggression and reduced white matter Integrity in mild traumatic brain injury: a DTI study. *Front Behav Neurosci* 2018; 12:1–11
- Dailey NS, Smith R, Vanuk JR, Raikes AC, Killgore WDS: Resting-state functional connectivity as a biomarker of aggression in mild traumatic brain injury. *NeuroReport* 2018; 29:1413–1417
- Epstein DJ, Legarreta M, Bueler E, King J, McGlade E, Yurgelun-Todd D: Orbitofrontal cortical thinning and aggression in mild traumatic brain injury patients. *Brain Behav* 2016; 6:e00581
- Finnanger TG, Olsen A, Skandsen T, et al: Life after Adolescent and adult moderate and severe traumatic brain injury: self-reported executive, emotional, and behavioural function 2-5 Years after injury. *Behav Neurol* 2015; 2015:2–5
- Formisano R, Schmidhuber-Eiler B, Saltuari L, Cigany E, Birbamer G, Gerstenbrand F: Neuropsychological outcome after traumatic temporal lobe damage. *Acta Neurochir* 1991; 109:1–4
- Goswami R, Dufort P, Tartaglia MC, et al: Frontotemporal correlates of impulsivity and machine learning in retired professional athletes with a history of multiple concussions. *Brain Struct Funct* 2016; 221:1911–1925
- Grafman J, Vance SC, Weingartner H, Salazar AM, Amin D: The effects of lateralized frontal lesions on mood regulation. *Brain* 1986; 109:1127–1148
- Knutson KM, Dal Monte O, Schintu S, et al: Areas of brain damage Underlying increased reports of behavioral disinhibition. *J Neuropsychiatr Clin Neurosci* 2015; 27:193–198
- Koponen S, Taiminen T, Kurki T, et al: MRI findings and Axis I and II psychiatric disorders after traumatic brain injury: a 30-year retrospective follow-up study. *Psychiatry Res Neuroimag* 2006; 146:263–270
- Lee JK, Hong YP: Psychiatric symptoms of the head trauma patients lesions by CNS lesions Detected by MRI. *J Traffic Med* 1997; 25:97–102
- Lopez-Larson M, King JB, McGlade E, et al: Enlarged thalamic volumes and increased fractional anisotropy in the thalamic radiations in veterans with suicide behaviors. *Front Psychiatry* 2013; 4:1–13
- McGlade E, Rogowska J, Yurgelun-Todd D: Sex differences in orbitofrontal connectivity in male and female veterans with TBI. *Brain Imaging Behav* 2015; 9:535–549
- Moore RD, Sauve W, Ellemberg D: Neurophysiological correlates of persistent psycho-affective alterations in athletes

Imaging Correlates of Dyscontrol in TBI

- with a history of concussion. *Brain Imaging Behav* 2016; 10:1108–1116
30. Nathan DE, Oakes TR, Yeh PH, et al: Exploring variations in functional connectivity of the resting state default mode network in mild traumatic brain injury. *Brain Connectivity* 2015; 5:102–114
 31. Oder W, Goldenberg G, Spatt J, Podreka I, Binder H, Deecke L: Behavioural and psychosocial sequelae of severe closed head injury and regional cerebral blood flow: a SPECT study. *J Neurol Neurosurg Psychiatr* 1992; 55:475–480
 32. Pardini M, Krueger F, Hodgkinson CA, et al: Aggression, DRD1 polymorphism, and lesion location in penetrating traumatic brain injury. *CNS Spectrums* 2014; 19:382–390
 33. Spikman JM, Timmerman ME, Coers A, van der Naalt J: Early computed tomography frontal abnormalities Predict Long-term Neurobehavioral problems but not affective problems after moderate to severe traumatic brain injury. *J Neurotrauma* 2016; 33:22–28
 34. Stern B, Glicksohn J, Stern M, Myslobodsky MS: Profiles of patients with a history of mild head injury. *Int J Neurosci* 2004; 114:1223–1237
 35. Tateno A, Jorge RE, Robinson RG: Pathological laughing and crying following traumatic brain injury. *J Neuropsychiatr Clin Neurosci* 2004; 16:426–434
 36. Van Der Naalt J, Van Zomeren AH, Sluiter WJJ, et al: Acute behavioural disturbances related to imaging studies and outcome in mild-to-moderate head injury. *Brain Inj* 2000; 14:781–788
 37. Yamaki T, Suzuki K, Sudo Y, et al: Association between uncooperativeness and the glucose metabolism of patients with chronic behavioral disorders after severe traumatic brain injury: a cross-sectional retrospective study. *BioPsychoSocial Med* 2018; 12:6
 38. Yurgelun-Todd DA, Bueler CE, McGlade EC, Churchwell JC, Brenner LA, Lopez-Larson MP: Neuroimaging correlates of traumatic brain injury and suicidal behavior. *J Head Trauma Rehabil* 2011; 26:276–289
 39. Barrash J, Stuss DT, Aksan N, et al: “Frontal lobe syndrome”? Subtypes of acquired personality disturbances in patients with focal brain damage. *Cortex* 2018; 106:65–80
 40. Peters ME, Moussawi K, Rao V: Teaching clinical Reasoning with an example Mnemonic for the neuropsychiatric syndromes of traumatic brain injury. *Acad Psychiatry* 2018; 42:686–689
 41. McAllister TW: Neurobiological consequences of traumatic brain injury. *Dialogues Clin Neurosci* 2011; 13:287–300
 42. Quinn D, Katzman J: “The Wizard of Oz.” A Depiction of TBI-related Neurobehavioral syndromes. *Acad Psychiatry* 2012; 36:340
 43. Brower MC, Price BH: Neuropsychiatry of frontal lobe dysfunction in violent and criminal behaviour: a critical review. *J Neurol Neurosurg Psychiatr* 2001:720–726
 44. Boronat S, Newberry P, Mehan W, Thiele EA, Duhaime AC: Klüver-Bucy syndrome after unilateral frontotemporal resection in a child with tuberous sclerosis. *Child’s Nervous Syst* 2013; 29:1391–1394
 45. Alsemari A, Malloy PF: The behavioral dyscontrol scale in the differential diagnosis of behavioral variant of frontotemporal dementia and Alzheimer disease. *Clin Neuropsychologist* 2019:1–10
 46. Schmahmann JD, Sherman JC: The cerebellar cognitive affective syndrome. *Brain* 1998; 121:561–579
 47. Greve K: Cognitive and emotional sequelae of cerebellar Infarct: a case report. *Arch Clin Neuropsychol* 1999; 14:455–469
 48. Argyropoulos GPD, van Dun K, Adamaszek M, et al: The cerebellar cognitive affective/Schmahmann syndrome: a task force paper. *Cerebellum* 2020:102–125
 49. Han SD, Drake AI, Cessante LM, et al: Apolipoprotein e and traumatic brain injury in a military population: evidence of a neuropsychological compensatory mechanism? *J Neurol Neurosurg Psychiatr* 2007; 78:1103–1108
 50. Tulay EE, Metin B, Tarhan N, Arıkan MK: Multimodal neuroimaging: Basic concepts and classification of neuropsychiatric diseases. *Clin EEG Neurosci* 2019; 50:20–33